



Shebenik-Jabllanica National Park

The wonder of nature that everyone wants to visit

General characteristics

The Shebenik - Jabllanica National Park contains some of the most exceptional mountainous areas in eastern Albania. This territory, part of Elbasan county, was declared as a National Park in 2008, covering an area of 33.928 hectares. Lying at an altitude of 270 to 2.260 meters above sea level, this area is characterised from a variety of climate conditions, geological formations, landscapes, habitats, as well as a rich biodiversity.



© Olsion Lama / PPNEA

© PPNEA



© PPNEA

Nature monuments

- Burimi i Studnës / Spring
- Shpella e Akullit / Ice Cave
- Shpella Eremite Koshorisht / Eremite Cave
- Guorra e Koshorishtës / Spring
- Liqeni i Shebenikut / Lake
- Liqeni i Varrit të Plakës / Lake
- Liqenet e Rrajcës / Lake
- Mështekna e Qarrishtës / Silver birch
- Liqeni i Draganit / Lake
- Shpella e Plakës Gizavesh / Cave
- Shpella e Kusarit / Cave
- Shpella e Rinës / Cave
- Shpella e Gurit Venjës / Cave



© O. Lama / PPNEA



© PPNEA / BLRP

© MIRJAN TOPI

© PPNEA / AKZM / BLRP

© XH.XHERRI/PPNEA

© O.LAMA/PPNEA

© PPNEA/BLRP

Biodiversity of Shebenik - Jabllanica National Park

Shebenik-Jabllanica National Park for many years has been in the focus of wildlife researchers. The first camera trapping study in this area was carried out in 2009, while in 2012 the research team of PPNEA managed to photograph one of the most endangered subspecies in the entire world, the critically endangered Balkan lynx. Since then, wildlife monitoring has been constantly carried out in the area by civil society organizations as well as the Regional Administration of Protected Areas Elbasan, a process that have proved the presence of 6 species listed in the Appendix II of the Bern Convention, as well as 14

species that are listed at the Red List of the Albanian fauna. Inside the National Park can be found a total number of 84 bird species, where 67% of them are listed at the Appendix II of the Bern Convention. Furthermore, Shebenik-Jabllanica shelters a considerable number of amphibians, reptiles, as well as freshwater fish.

The National Park of Shebenik-Jabllanica is considered as one of the 45 Important Plant Areas in the country.

© SVETOSLAV SPASOV

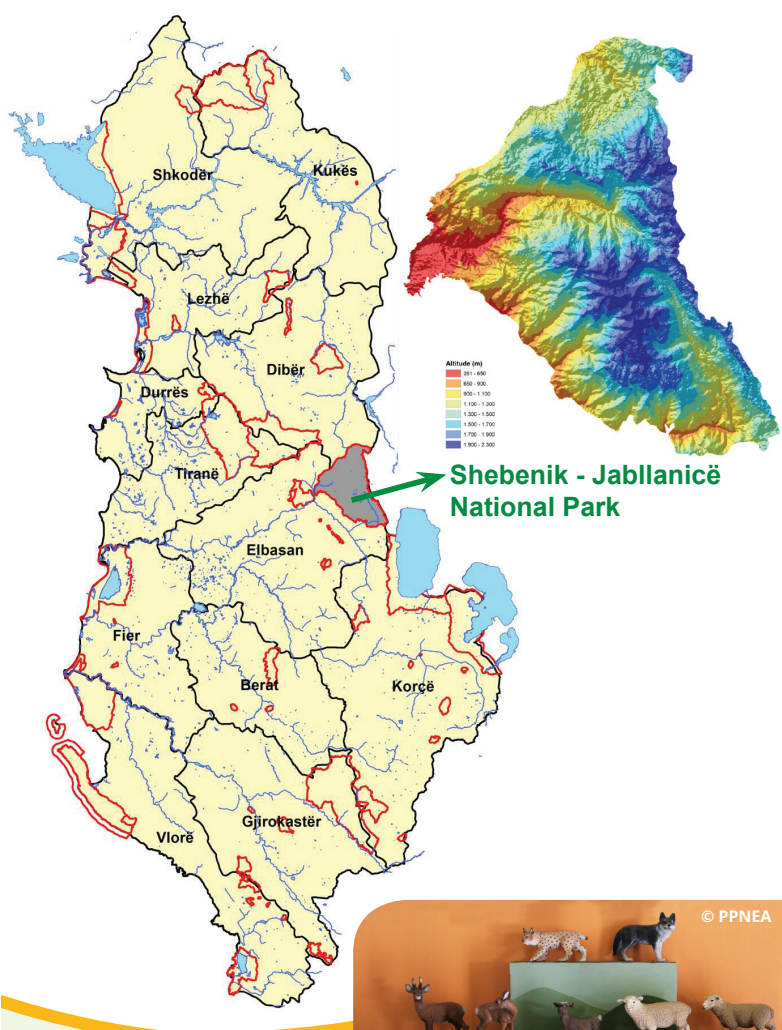




Local tradition

Shebenik-Jabllanica National Park includes six administrative units with a total population of 44,677 residents. This area has been constantly inhabited by people. Within the park there are traces of early settlements, dating from the bronze and iron ages.

The local community is mostly focused in agriculture and livestock, producing organic products such as milk, cheese, butter, as well as the famous potato variety of Stebleva. Furthermore, the introduction of the area to different Albanian and international tourists has paved the way for the establishment of several guest houses, a sustainable way of tourism which goes along with nature.



© PPNEA

Visit us!

The visitor centre of the National Park Shebenik-Jabllanica is located in Fushe-Stude village. Since its creation, this centre serves the purpose of informing every local and international tourist who wants to enjoy everything that the nature of Shebenik-Jabllanica can offer. Inside the visitor centre, through countless communication materials produced by the Regional Administration of Protected Areas Elbasan, tourists can get all the information needed for experiencing the best of this area.

Protected Areas for Nature and People (PA4NP)

This leaflet was produced in the framework of the project “Protected Areas for Nature and People”, which is being implemented by PPNEA in Albania, with the support of WWF Adria and the Swedish International Development Cooperation Agency.

Our objectives are:

- Improving national policies for Protected Area management and biodiversity conservation;
- Strengthening the accountability of decision makers;
- Raising awareness of the importance of protected areas and biodiversity in general;
- Promoting and supporting civic activism; and
- Increasing the participation of local communities in the management of protected areas.

© XH.XHERRI / PPNEA

*Preserving biodiversity in Albania
and securing the wellbeing for
current and future generations.*