



SPRING ALIVE FOR BIRDS

SPRING ALIVE IS AN INTERNATIONAL PROJECT TO GET KIDS EXCITED ABOUT BIRDS AND CONSERVATION. ORGANISED BY BIRDLIFE INTERNATIONAL, A WORLDWIDE PARTNERSHIP FOR THE CONSERVATION OF BIRDS, SPRING ALIVE HELPS CHILDREN, THEIR FAMILIES, FRIENDS AND TEACHERS ACROSS EUROPE, AFRICA AND ASIA, TO UNDERSTAND THE NEED FOR INTERNATIONAL CONSERVATION OF MIGRATORY SPECIES.

YOU CAN GET INVOLVED BY CONTACTING YOUR LOCAL BIRDLIFE PARTNER - MORE INFORMATION ON WWW.SPRINGALIVE.NET.



FOLLOW US AND FIND OUT MORE:

[FACEBOOK.COM/SPRINGALIVEFORBIRDS](https://www.facebook.com/springaliveforbirds)
WWW.SPRINGALIVE.NET
WWW.BIRDLIFE.ORG

FOR MORE ADVICE ON BEING
A GOOD BIRDWATCHER PLEASE CONTACT YOUR
NATIONAL BIRDLIFE PARTNER.

HOW SHOULD WE PROTECT BIRD NESTS?

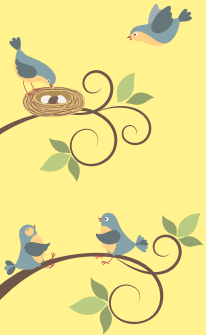


HEIDELBERGCEMENT



HOW SHOULD WE PROTECT BIRD NESTS?

EVERY YEAR, BIRDS SPEND A HUGE AMOUNT OF TIME AND ENERGY TO LOOKING AFTER THEIR EGGS AND CHICKS. IT CAN BE EXCITING WHEN YOU FIND A BIRD NESTING IN YOUR GARDEN OR LOCAL AREA - BUT IF YOU WANT TO GIVE IT THE BEST POSSIBLE CHANCE, IT'S IMPORTANT TO LEAVE IT IN PEACE AND SAFETY.



LET YOUR GARDEN GROW

THE TREES, HEDGES AND PLANTS IN YOUR GARDEN ARE ALL FANTASTIC HIDING PLACES FOR NESTS - SO DON'T TRIM THEM UNTIL BREEDING SEASON IS OVER. IF YOU LIVE IN NORTHERN EUROPE, THIS IS ROUGHLY BETWEEN FEBRUARY AND AUGUST. YOU CAN LOOK UP YOUR OWN COUNTRY'S BREEDING SEASON FOR A MORE SPECIFIC GUIDE.

KEEP YOUR DISTANCE



IF YOU GET TOO CLOSE TO A NEST, YOU COULD RISK DAMAGING IT OR SCARING THE PARENTS AWAY FOREVER. PREDATORS COULD ALSO FOLLOW YOUR TRAIL TOWARDS AN EASY SNACK. SO REMEMBER ITS LOCATION, STAY AS FAR AWAY AS POSSIBLE AND WATCH IT THROUGH YOUR BINOCULARS INSTEAD!

KEEP PETS INDOORS



EVEN THE GENTLEST CAT CAN BECOME A COLD-BLOODED HUNTER WHEN OUTDOORS. IF YOU CAN, KEEP YOUR CAT INSIDE, OR CREATE AN ENCLOSED OUTSIDE AREA OR "CATIO". SIMILARLY, KEEP YOUR DOG ON A LEAD IN PLACES WHERE BIRDS ARE NESTING NEAR THE GROUND.

PUT UP A BIRD BOX



BIRD BOXES ARE GREAT READY-MADE HOMES. TO STOP PREDATORS GETTING IN, YOU CAN REINFORCE THE ENTRANCE WITH METAL OR INSTALL A TUBE INSTEAD OF A HOLE. TRY TO PLACE IT AT LEAST 3 METRES FROM THE GROUND AND FAR AWAY FROM ANY BUILDINGS OR PLANTS THAT PREDATORS CAN CLIMB UP.

DRAW THE KINDS OF MATERIALS YOU WOULD USE TO MAKE A NEST IF YOU WERE A BIRD:

